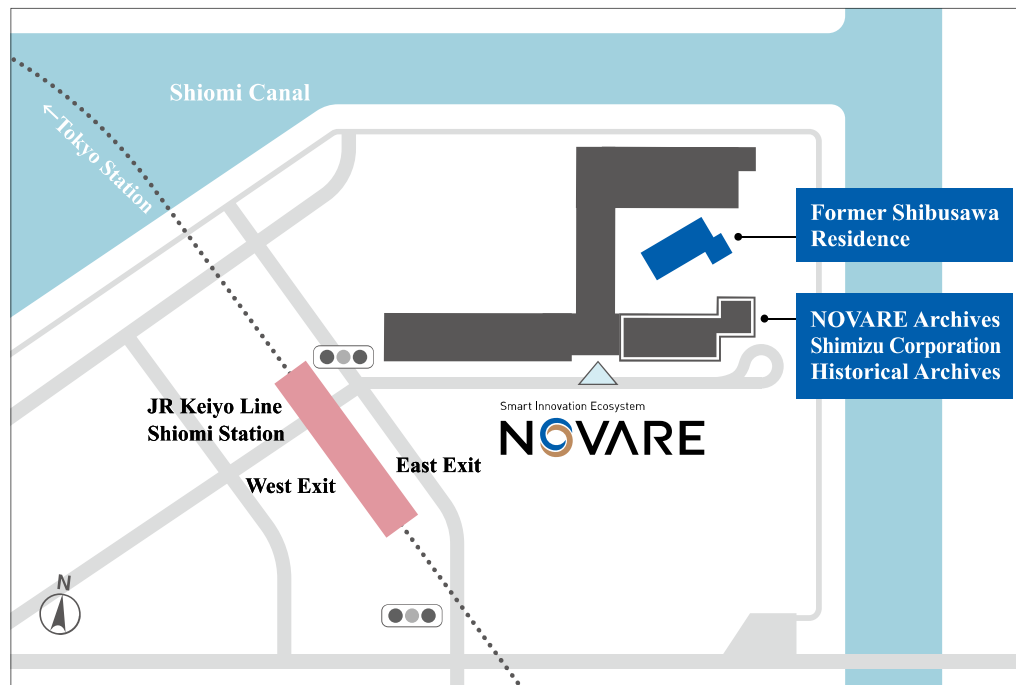


Access



3 minutes on foot from the East exit of Shiodome Station
(JR Keiyo Line)

There is no parking available. Please use public transport.

2-8-20 Shiodome, Koto-ku, Tokyo 135-0052
Shimizu Corporation NOVARE
Shimizu Corporation Historical Archives



Exit the East exit of Shiodome Station and cross the intersection you see diagonally to the left.

※ There is a convenience store in front of you when you exit the ticket gate at Shiodome Station. The East exit is on the right-hand side as you face the convenience store.



Turn right in front of the square.



Go straight on the white sidewalk.

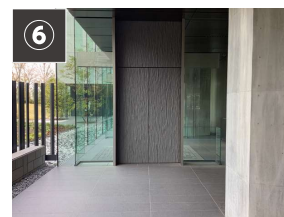


Go diagonally left and proceed under the eaves.

※ The gray building in the back is the Shimizu Corporation Historical Archives.



Continue along the road under the pilotis, keeping the Former Shibusawa Residence on your left.



You will see the entrance to our Archives.